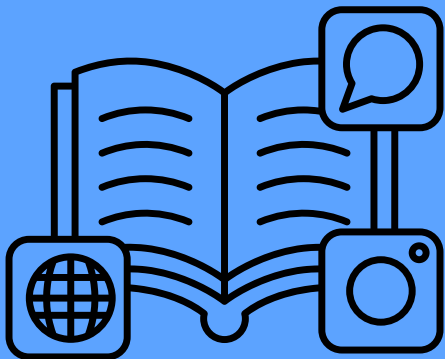


# ERASMUS + BIP SUMMER SCHOOL ELESS 2026 LAW AND ECONOMY SUMMER SCHOOL

15 June - 26 June (Online classes)  
29 June - 3 July (Onsite classes)

The European Law and Economy Summer School (ELESS) offers students an interdisciplinary learning experience focused on the **legal and economic dimensions** of the European Union. Through lectures, workshops, and interactive discussions with international experts, participants expand their knowledge, exchange perspectives, and engage with current EU challenges in a stimulating academic environment. **Join us in Rijeka to exchange ideas, gain new perspectives, and experience an inspiring international academic environment!**





# OBJECTIVES

To enable students to:

- acquire foundational knowledge of EU legal frameworks and key socio-economic concepts relevant to European integration;
- understand the relationship between legal regulation, market mechanisms, and public policy in the EU;
- critically analyse EU regulatory instruments and their economic implications for market actors;
- apply interdisciplinary perspectives to practical issues related to doing business in the EU internal market;
- develop analytical and critical thinking skills necessary for engaging with EU law and policy in academic and professional contexts.


Faculty of UNIRI organizing the BIP:  
Faculty of Law Rijeka (PRAVRI)

BIP organizers: Ana Pošćić, PhD, Full Professor,  
Adrijana Martinović, PhD, Associate Professor



eless@pravri.uniri.hr

## ONSITE VENUE

 Faculty of Tourism and Hospitality Management, Primorska 46, HR 51414 Ika

<https://excellence.uniri.hr/>

## Partner institutions:

- University of Trento
- University of Bergamo
- Alexandru Ioan Cuza University of Iași
- Charles University in Prague
- University of National and World Economy (UNWE) Sofia
- University of Maribor
- University of Camerino
- University of Almeria

# DESTINATION

## Opatija

Located just 13 km from Rijeka, Opatija lies in the beautiful Kvarner Bay at the foot of Mount Učka. Once a small fishing village, it developed in the 19th century into one of the most elegant seaside resorts of the Austro-Hungarian Empire. With its grand villas, historic hotels, and scenic seaside promenade, Opatija combines rich heritage with a vibrant Mediterranean atmosphere.

Today, the town is known for its unique blend of history, architecture, and coastal charm, making it a perfect destination for learning, networking, and enjoying the Adriatic lifestyle



## Lovran

Nestled between the slopes of Mount Učka and the Adriatic Sea, Lovran is the oldest settlement on the Opatija Riviera, with roots dating back to Roman times. Its charming medieval old town grew around a small harbor that connected the town with maritime routes across the Adriatic.

Known for its fragrant laurel trees and traditional gastronomy, Lovran offers a relaxed coastal atmosphere, beautiful views, and a rich cultural heritage that reflects centuries of Mediterranean life.



## HOW TO GET THERE:



**Zagreb Airport (ZAG)** 190 km from Opatija, approx. 2 h by car.

**Pula Airport (PUY)** 100 km from Opatija, approx. 1 h by car.

**Ronchi dei Legionari Airport (TRS)**, Trieste, Italy 110 km from Opatija, approx. 1 h by car.

**Ljubljana Airport (LJU)**, Slovenia 130 km from Opatija, approx 1.5 h by car.

**Marco Polo Airport (VCE)**, Venice, Italy 250 km from Opatija, approx. 2.5 h by car.



**Matulji**, 5 km from Opatija  
**Rijeka**, 15 km from Opatija  
**Zagreb**, 200 km from Opatija

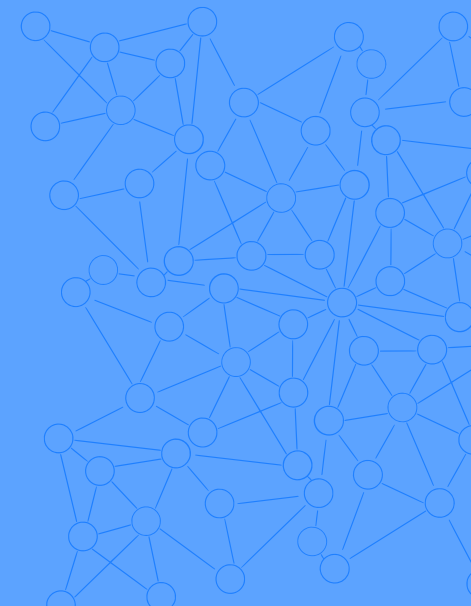
# SOCIAL PROGRAMME



Boat trip



Networking Dinner



# ACCOMODATION INFORMATION

The Faculty is located on the coast, making accommodation availability scarce, especially during the spring and summer months. Therefore, we strongly recommend booking your accommodation as early as possible to secure a suitable place to stay.

If you are looking for accommodation near the Faculty, consider searching in the following nearby locations:

- **Ika** – the small town where the Faculty is located.
- **Ičići** – a nearby town within close proximity to the Faculty.
- **Lovran** – approximately a 20-minute walk or a 5-minute ride by bus line 32.
- **Opatija** – reachable within 20 minutes by bus line 32.
- **Rijeka** – located 20 kilometers away, with a 55-minute ride on bus line 32 to the Faculty.

Some suggestions near the faculty:

- **Hostel Link** – 8 minutes' walk to the Faculty; 5 minutes walking distance to the beach.
- **Hotel Lovran** – 12 minutes walking distance to the Faculty, 5 minutes walking distance to the beach.
- **Hotel Excelsior** – 12 minutes walking distance to the Faculty, 5 minutes walking distance to the beach.

**USEFUL LINK:**

**<https://visitlovran.com/en/where-to-stay/>**



# USEFUL INFORMATION

## EXPERIENCE LIFE IN LOVRAN AND OPATIJA

### **Gastronomy**

- Opatija and Ika are tourist resorts, there are many places to dine, some of which are very expensive. For budget prices in Lovran, we recommend Fast food Andrea Lovran, Lovranski pub, Pizzeria Delfino and Santa Maria. For local food at budget prices in Opatija, we recommend Taverna Istranka and Bocarija Opatija.

### **Beaches**

- have a swim at Lovran Grand Beach or Ičići Grand Beach, or take a bus nr. 32A and go to the one of the most beautiful beach Mošćenička Draga

### **Outdoor activities**

- volleyball (Ičići Grand Beach)
- snorkeling (Mošćenička Draga)
- hiking and biking (Učka Mountain)

### **Art and culture**

- Visit Opatija
- Visit Lovran

### **Bus schedule**

- <https://www.autotrolej.hr/en/routes/linije-32-32a/>

